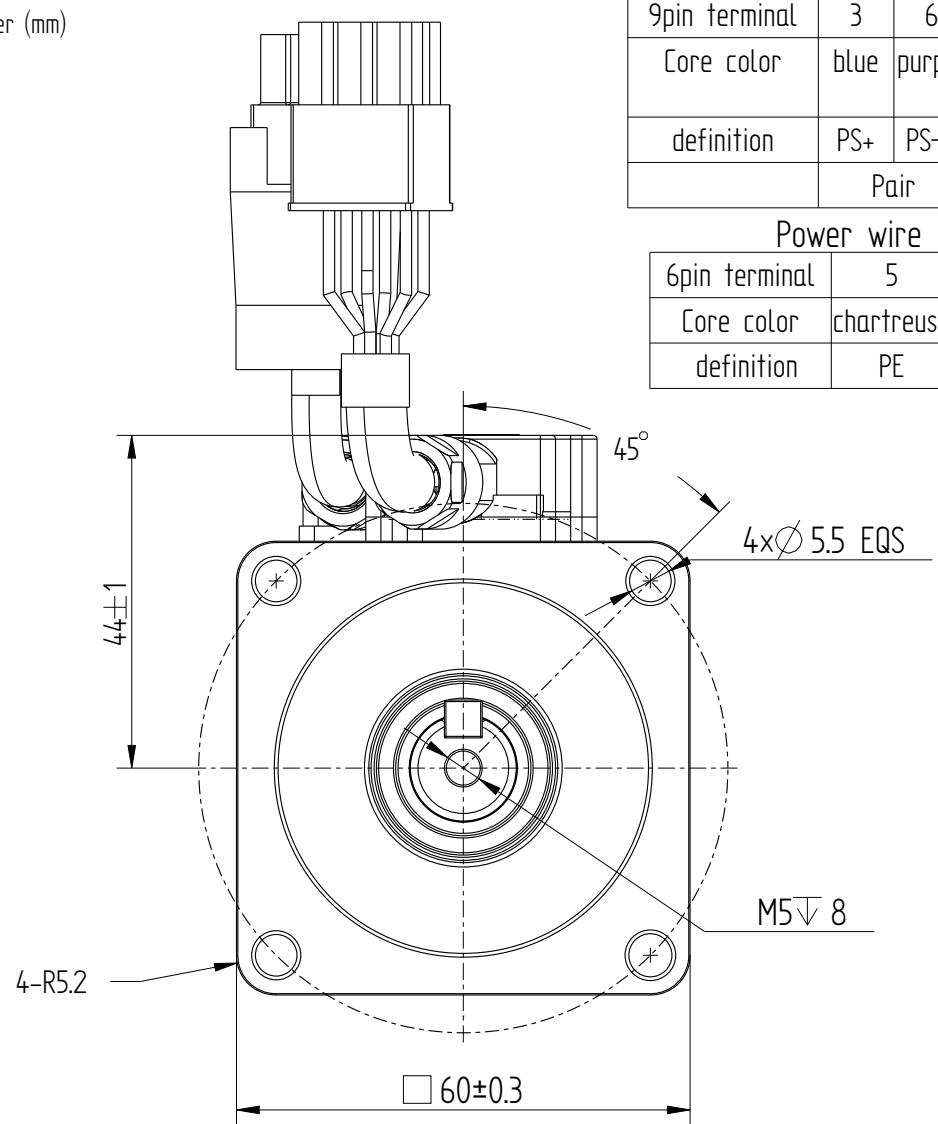


Copyright:Copyright infingmengt reserved

INOVANCE

| Amendment | Description |
|-----------|-------------|
|           |             |

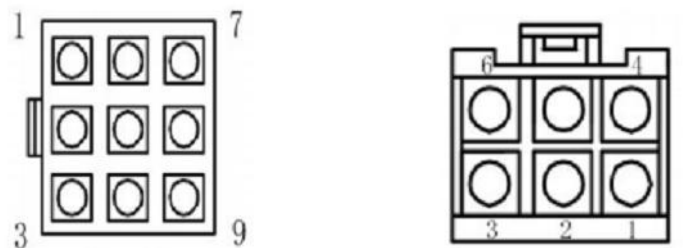
Unit: Millimeter (mm)



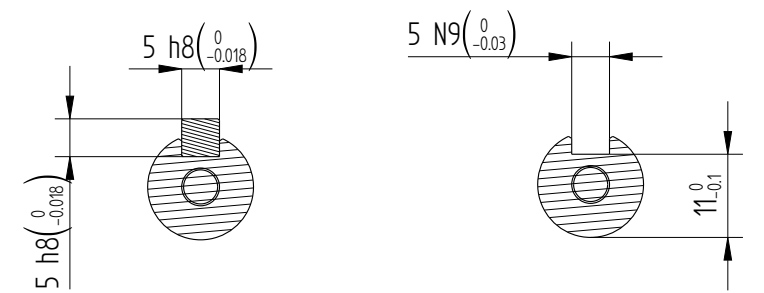
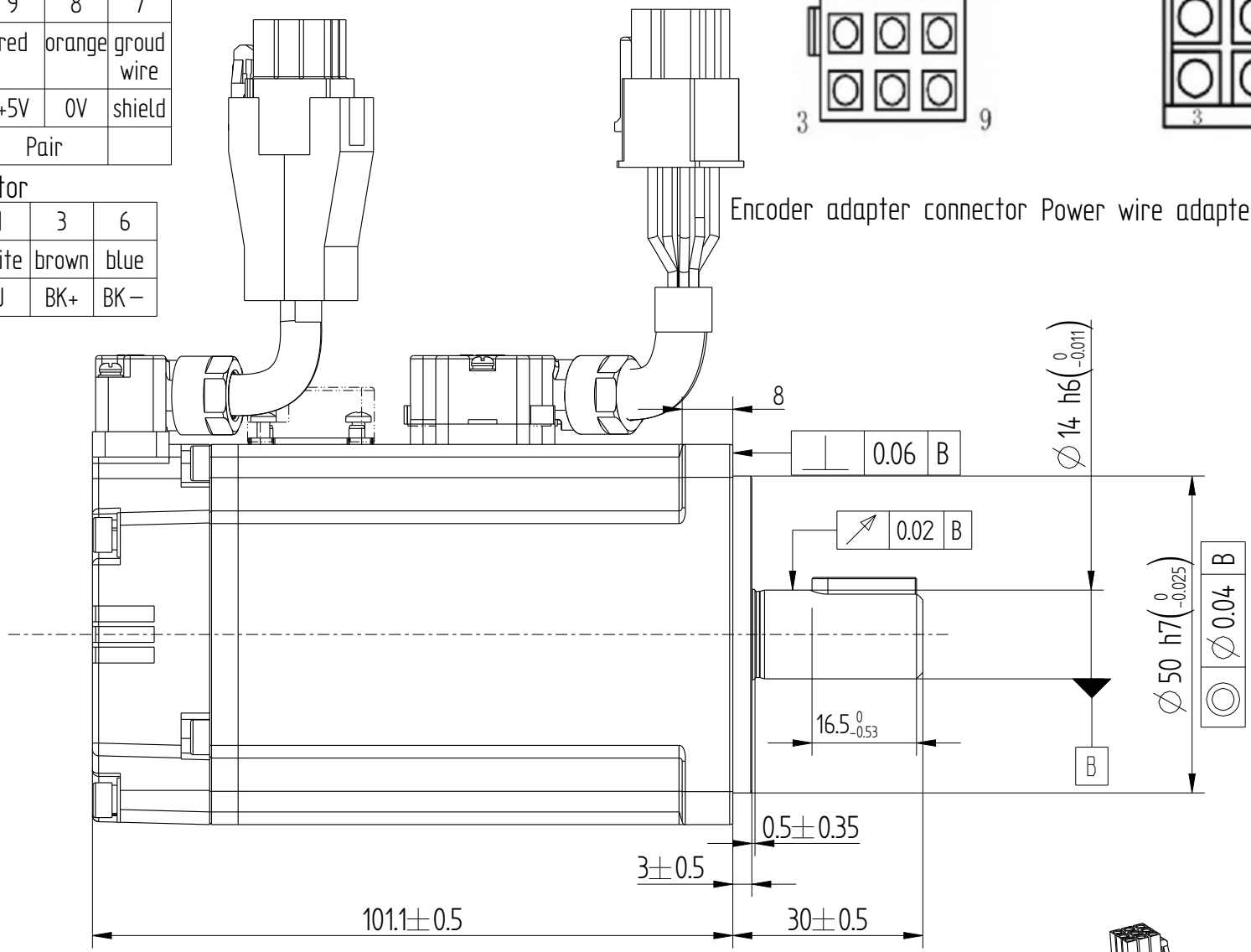
| Encoder adapter connector |      |        |       |       |      |        |            |
|---------------------------|------|--------|-------|-------|------|--------|------------|
| 9pin terminal             | 3    | 6      | 1     | 4     | 9    | 8      | 7          |
| Core color                | blue | purple | brown | black | red  | orange | groud wire |
| definition                | PS+  | PS—    | DC+   | DC—   | +5V  | 0V     | shield     |
|                           | Pair |        | Pair  |       | Pair |        |            |

| Power wire adapter connector |            |     |       |       |       |      |
|------------------------------|------------|-----|-------|-------|-------|------|
| 6pin terminal                | 5          | 4   | 2     | 1     | 3     | 6    |
| Core color                   | chartreuse | red | black | white | brown | blue |
| definition                   | PE         | W   | V     | U     | BK+   | BK—  |

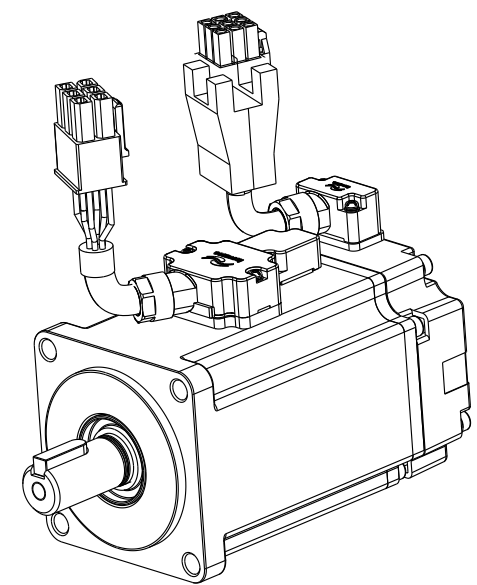
note:  
1、The lead wire cable length about 300±20mm

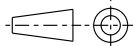


Encoder adapter connector Power wire adapter connector



Dimension of shaft end with key Dimension of shaft end



|                 |               |            |      |                       |       |         |   |                           |
|-----------------|---------------|------------|------|-----------------------|-------|---------|---|---------------------------|
|                 |               |            |      | Motor Outline Drawing |       |         | 0111A183-WX   |                           |
| B01             | Replace       | /          | /    |                       |       |         |   |                           |
| Version         | Change method | Changed by | Date |                       |       |         |   |                           |
| Design          | /             |            |      |                       |       |         |   |                           |
| Check           | /             |            |      | /                     |       |         | Mark<br> | INOVANCE                  |
| Craft           | /             |            |      |                       |       |         |   |                           |
| Verify          | /             |            |      |                       |       |         |   |                           |
| Standardization | /             |            |      | Weight                | Scale | Version | Page 1 of 1   |                           |
| Approve         | /             |            |      | 1.16kg                | 1:2   | B01     | Model   | MS1H4-20B30CB-A334R-S-INT |

| Basic function parameters        |          |
|----------------------------------|----------|
| Rated power kW                   | 0.2      |
| Rated voltage V                  | 220      |
| Rated current A                  | 13       |
| Peak current at rated speed A    | 5.3      |
| Rated torque Nm                  | 0.64     |
| Peak torque at rated speed Nm    | 2.24     |
| Rated speed rpm                  | 3000     |
| Max speed rpm                    | 7000     |
| Rotor inertia kg·cm <sup>2</sup> | 0.23±10% |
| Encoder resolution               | 23bit    |
| Insulation class                 | F(155)   |
| Protection class                 | IP67     |
| Static torque of brake Nm        | ≥15      |
| Brake power supply V             | DC24±10% |
| Brake backlash°                  | ≤1       |
| Duty cycle                       | S1       |
| Radial load N                    | ≤245     |
| Axial load N                     | ≤74      |

